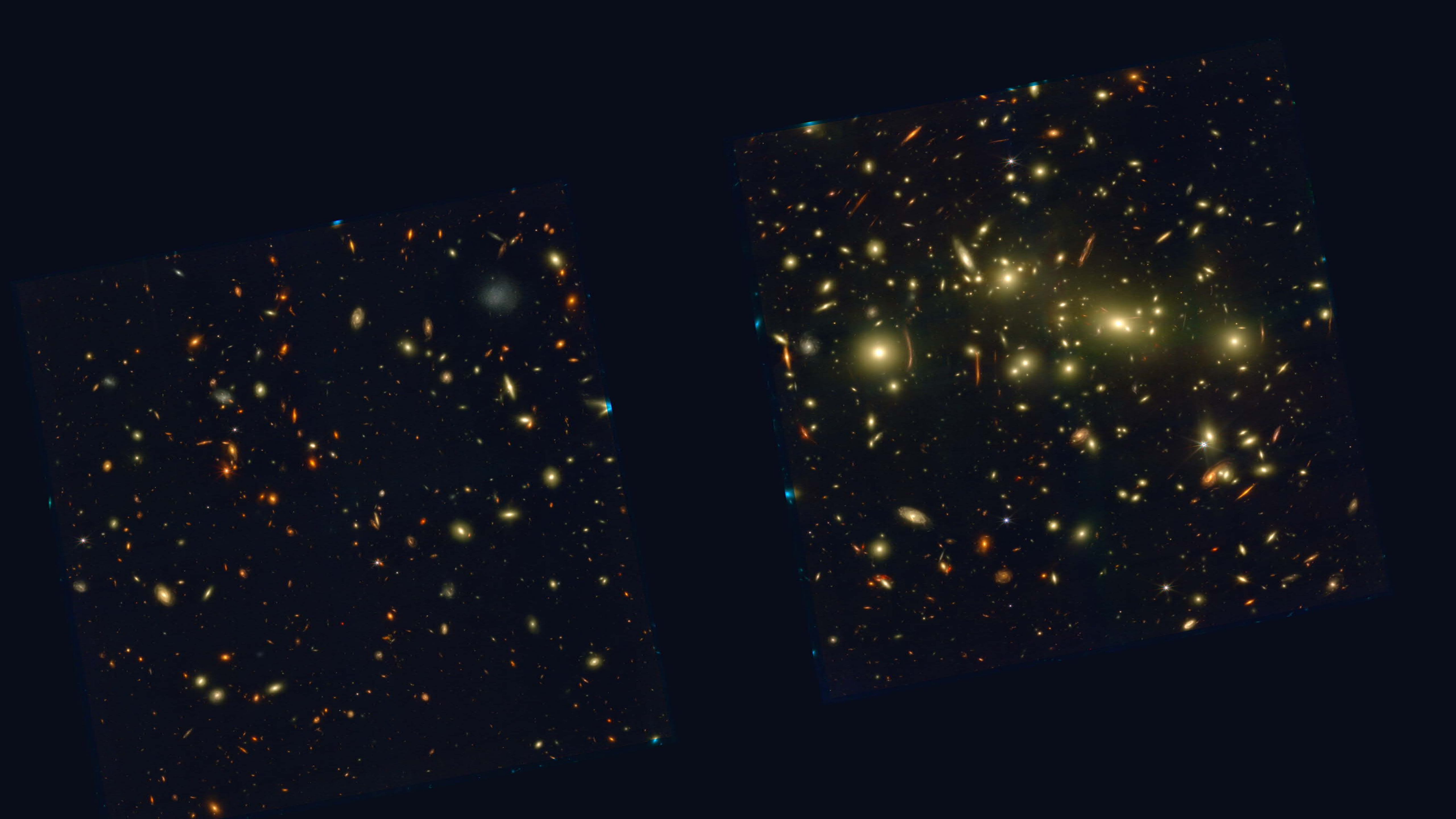
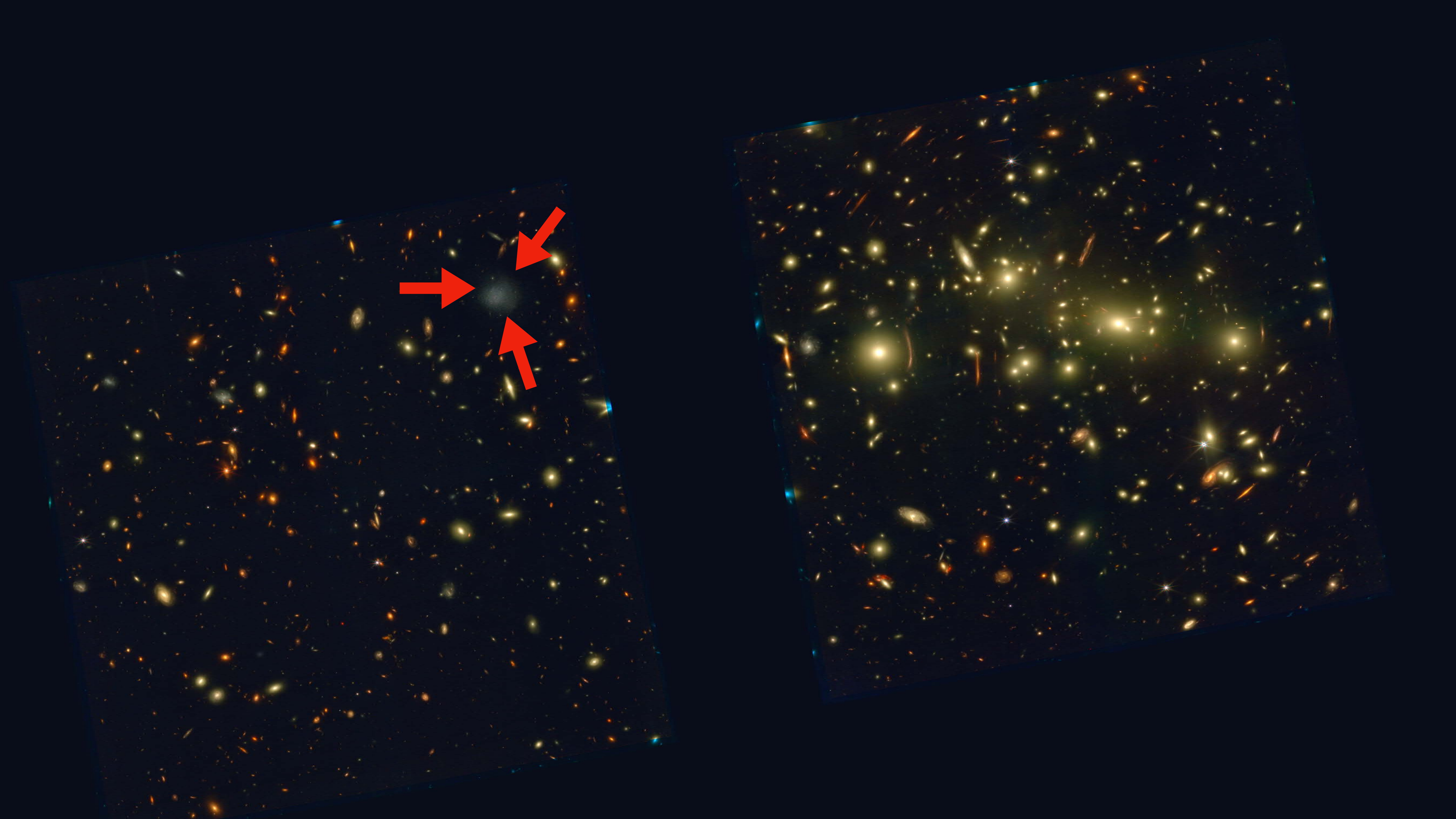


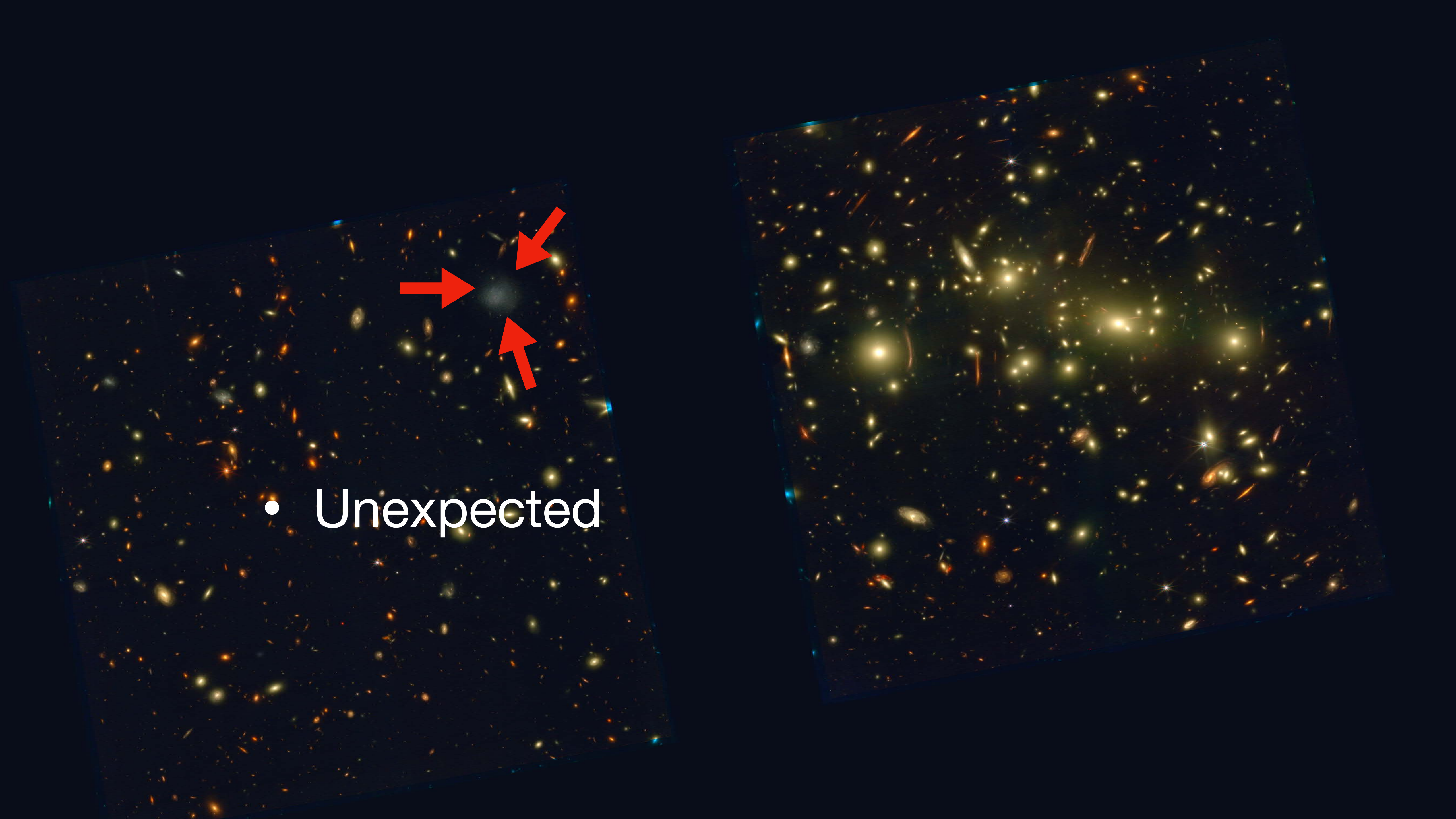
PEARLSDG

Timothy Carleton
Assistant Research Scientist
Arizona State University
Beus Center for Cosmic Foundations
tmcarlet@asu.edu

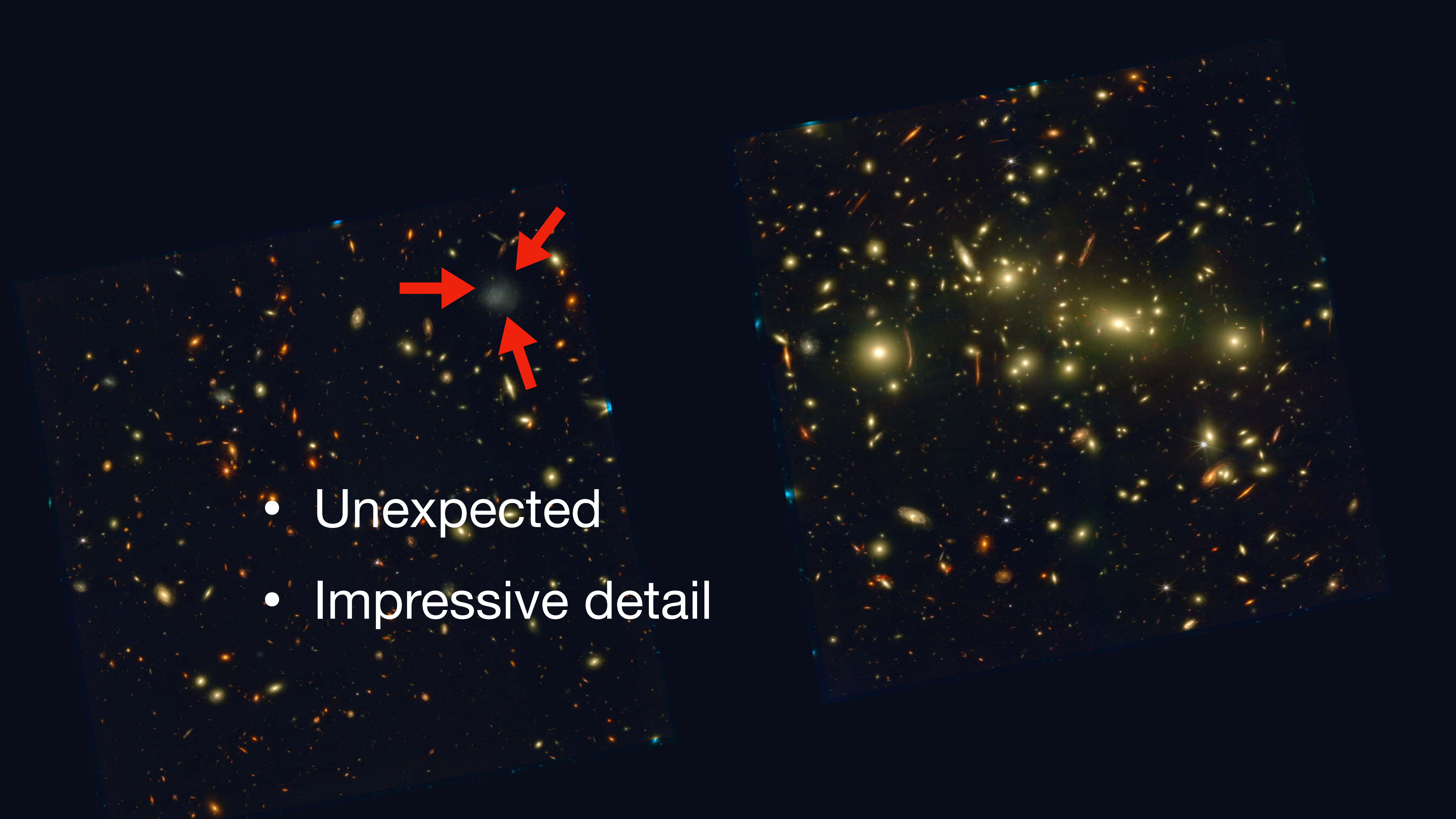
arXiv:2309.16028



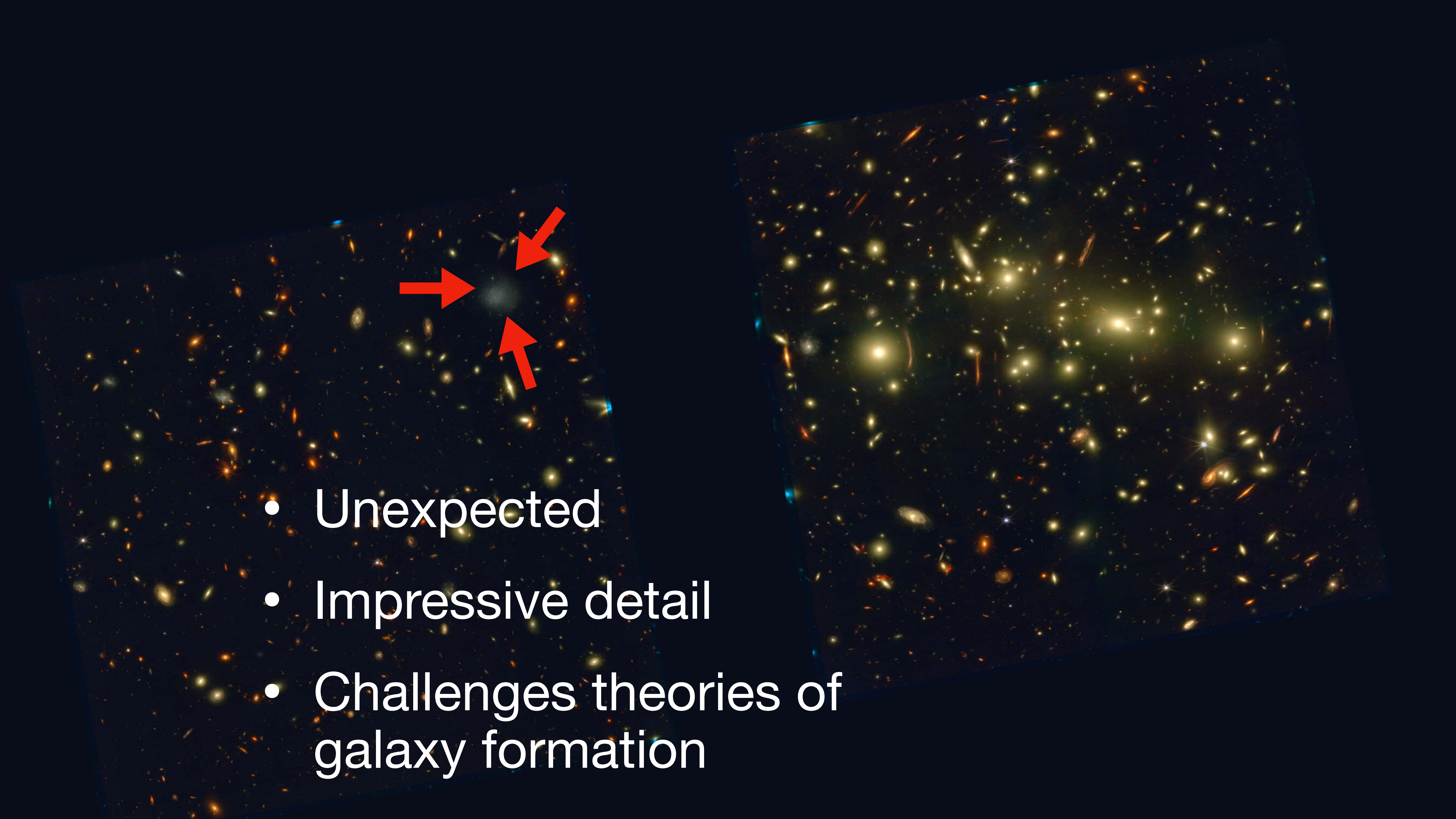




- Unexpected



- Unexpected
- Impressive detail

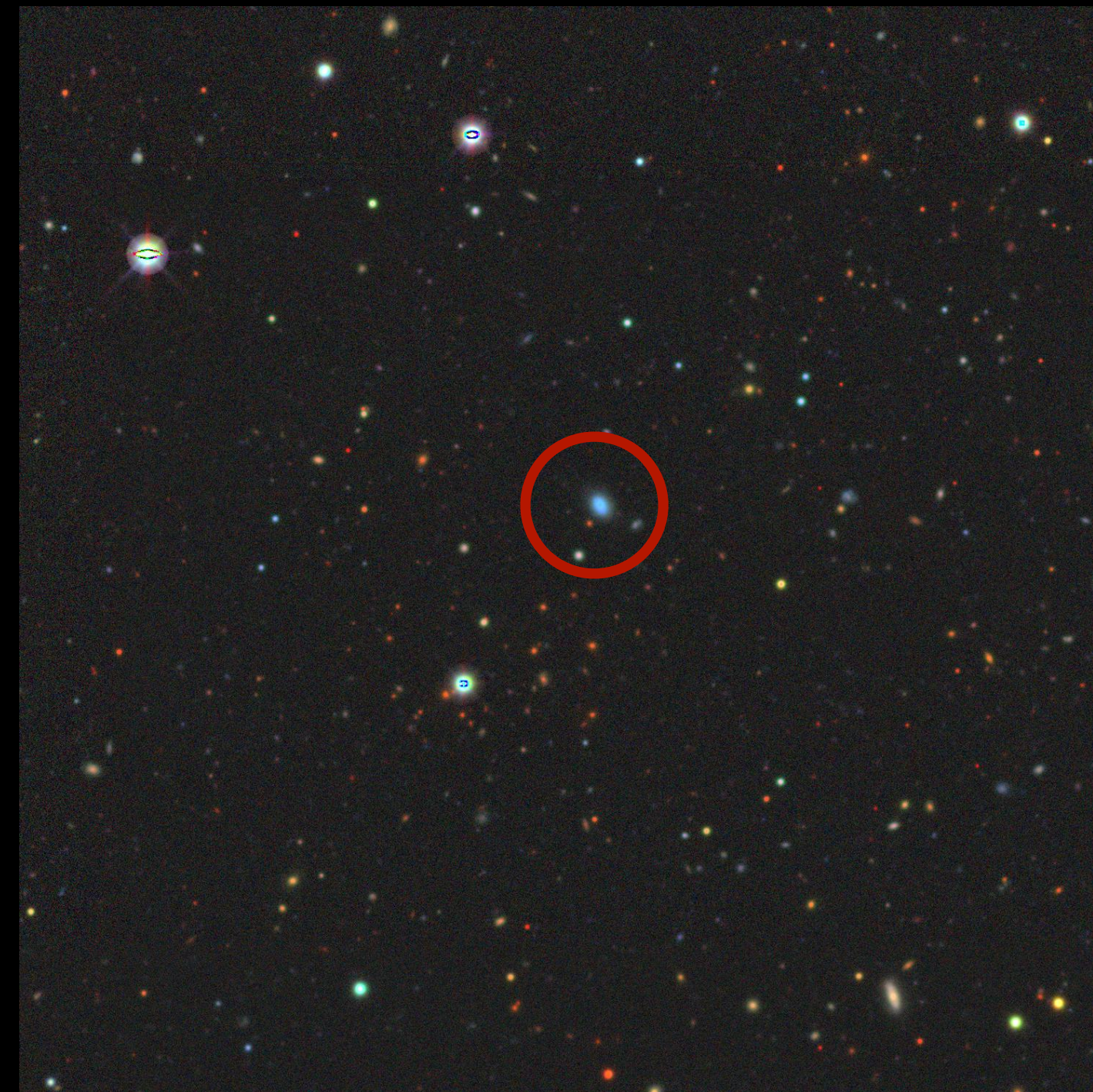
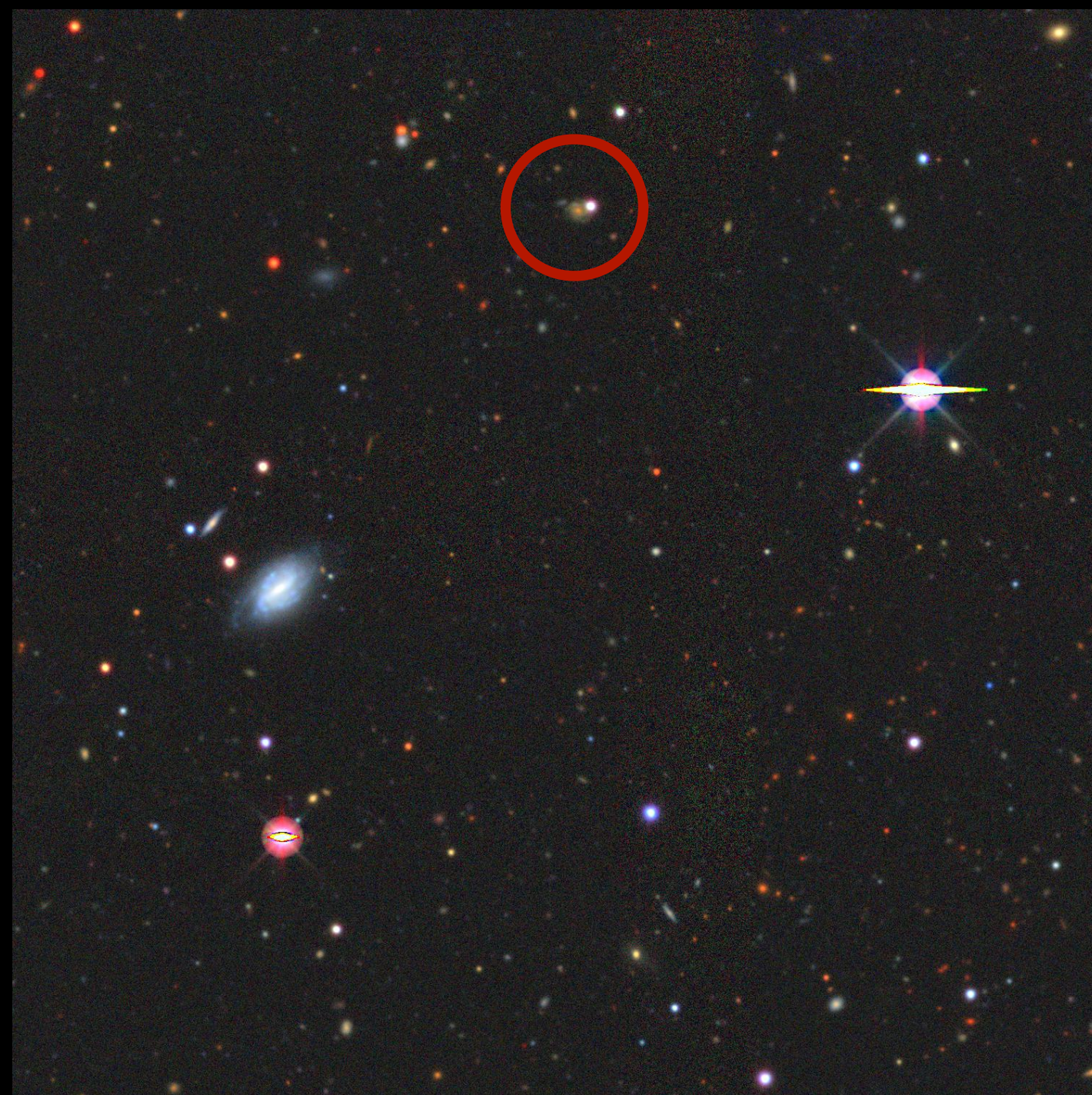
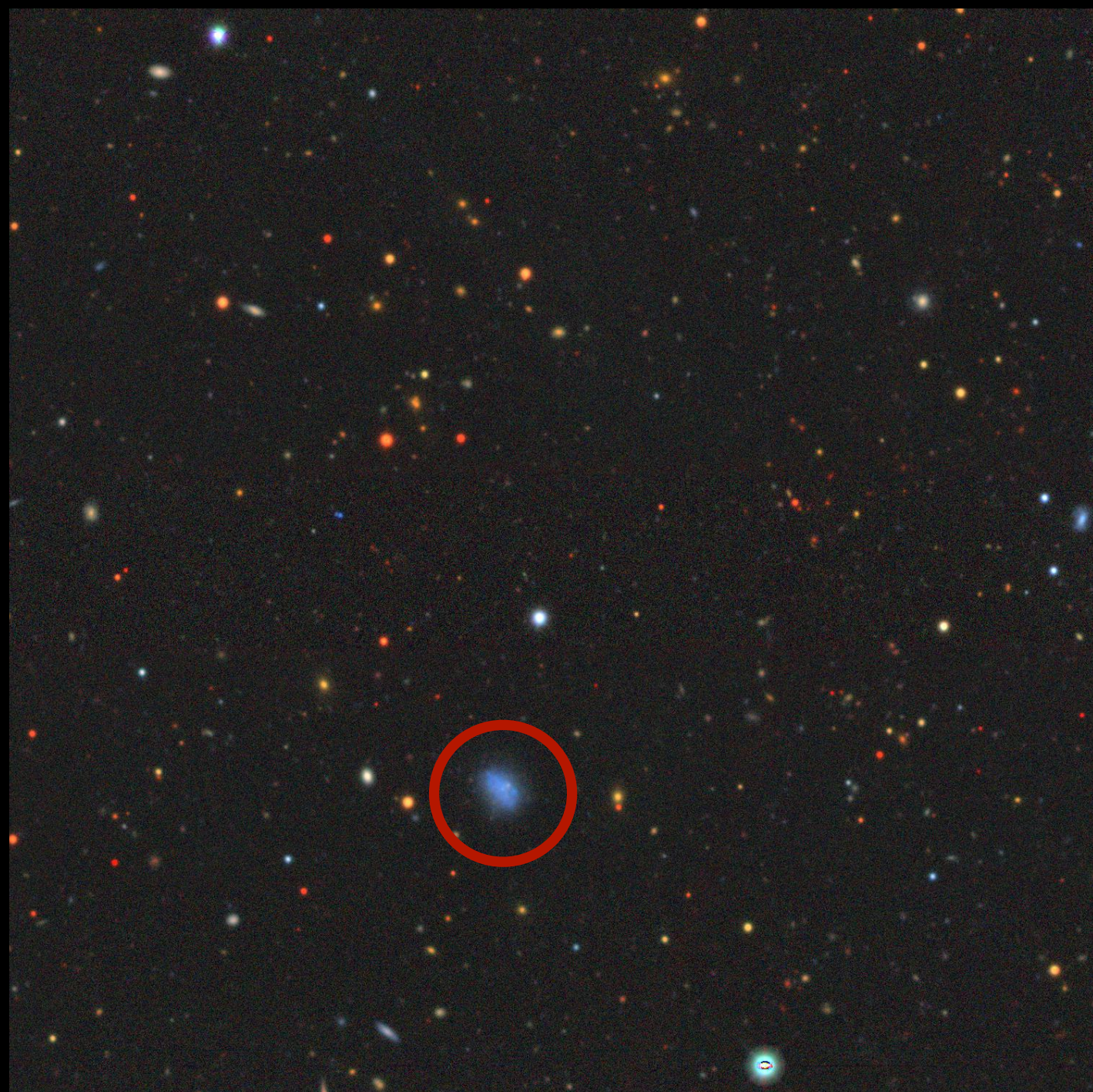


- Unexpected
- Impressive detail
- Challenges theories of galaxy formation

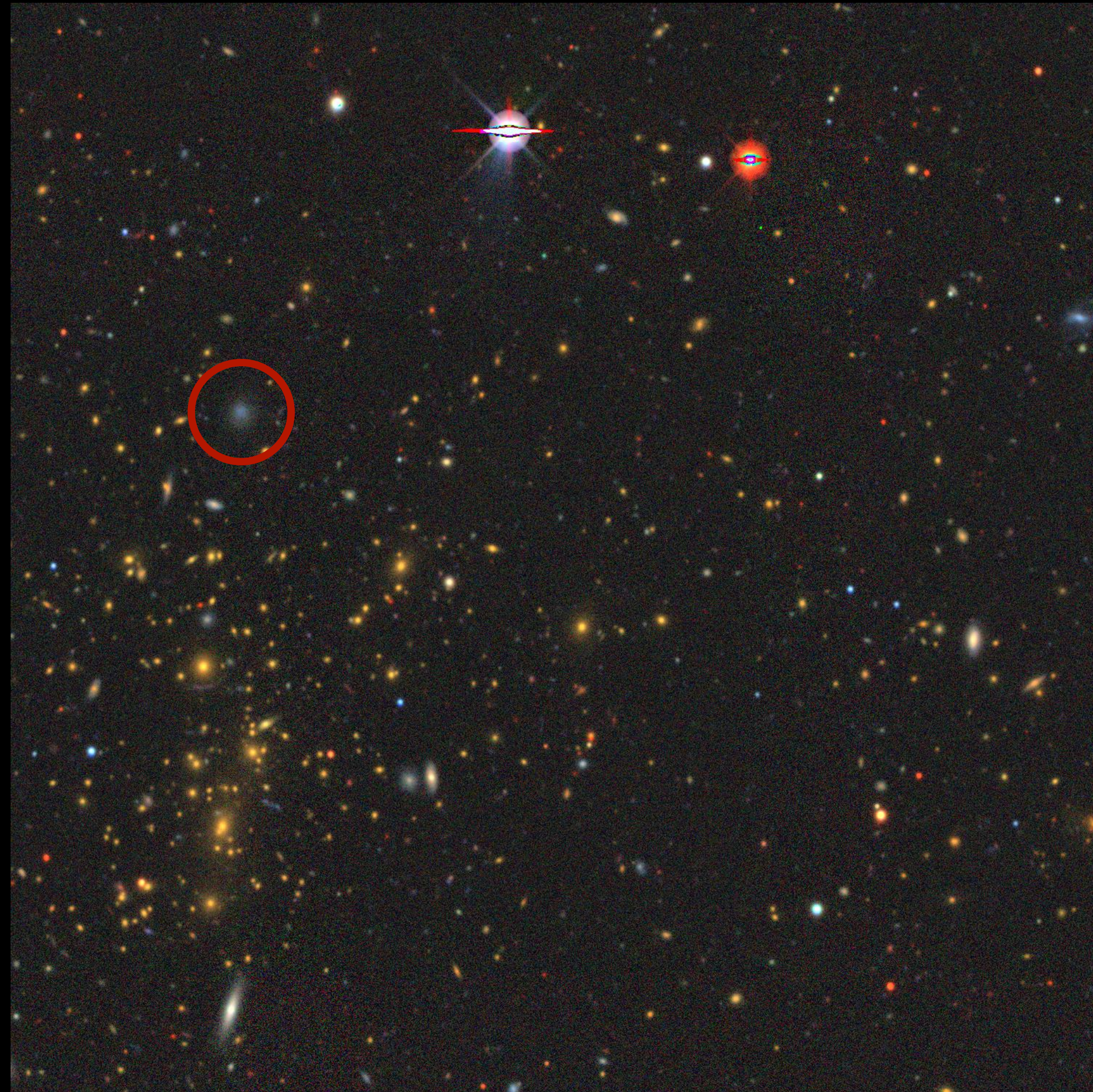
Individual stars visible in JWST imaging



Nearly all dwarf galaxies are either young and isolated or old with a massive companion.



PEARLSDG is neither!



Summary

- PEARLSDG shows up unexpectedly in JWST imaging
- PEARLSDG is seen in exquisite detail - imaging individual stars
- PEARLSDG challenge our theory of galaxy evolution - it points to a new way of forming dwarf galaxies

Timothy Carleton
Assistant Research Scientist
Arizona State University
Beus Center for Cosmic Foundations
tmcarlet@asu.edu

arXiv:2309.16028