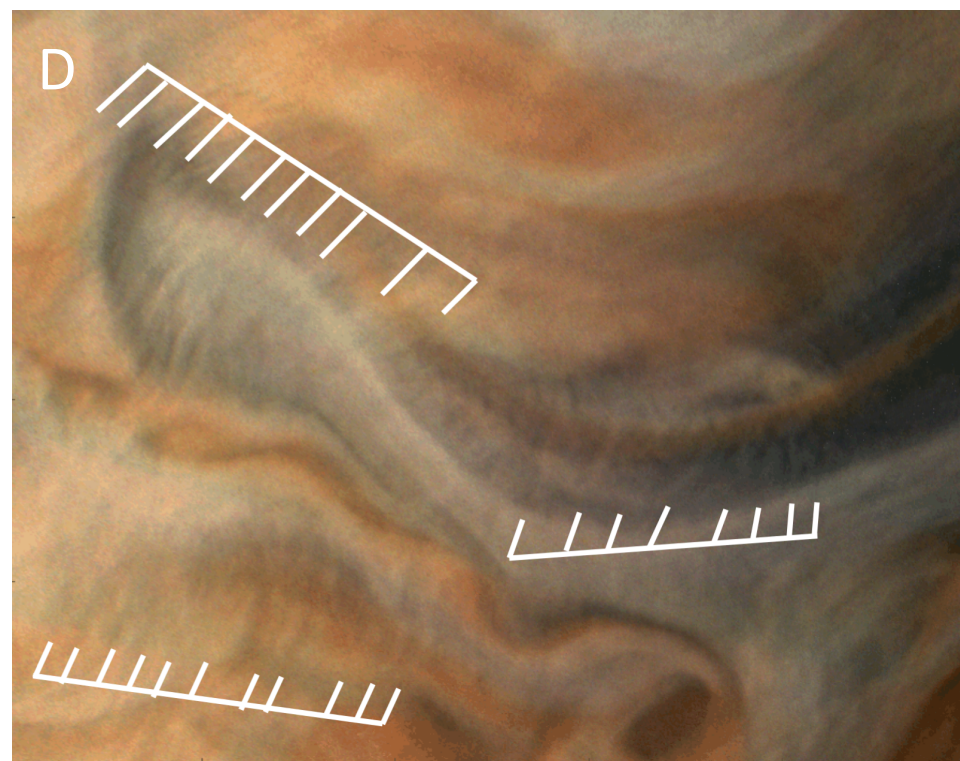
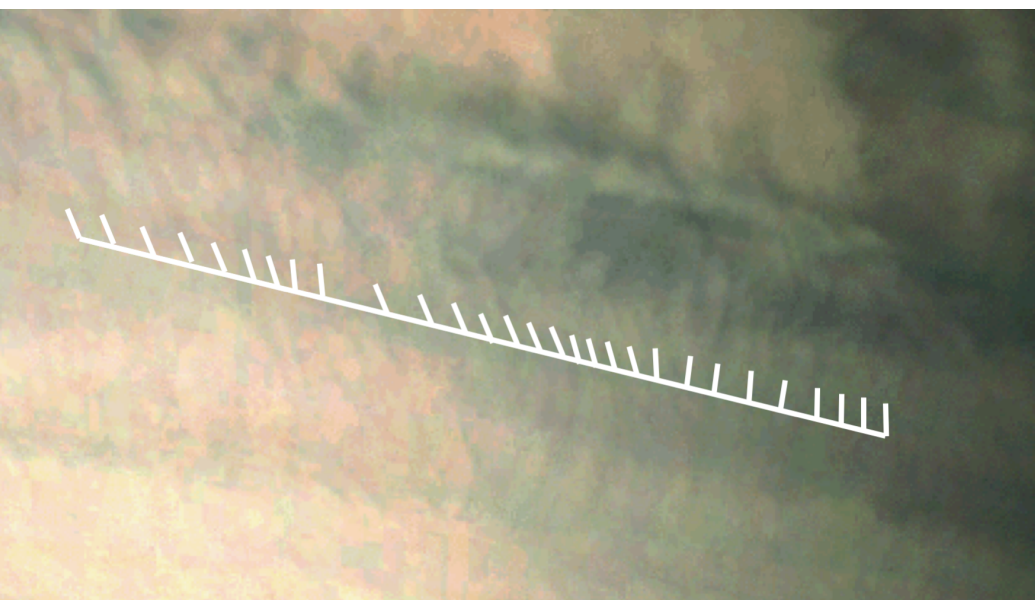
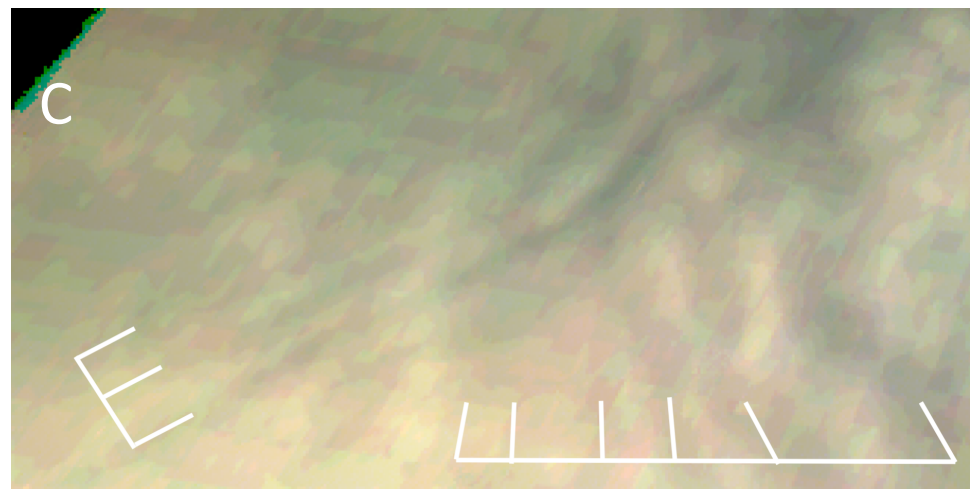
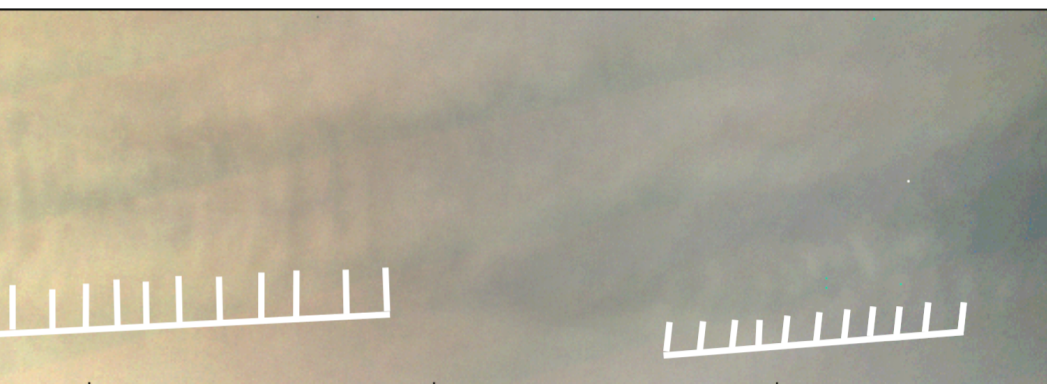


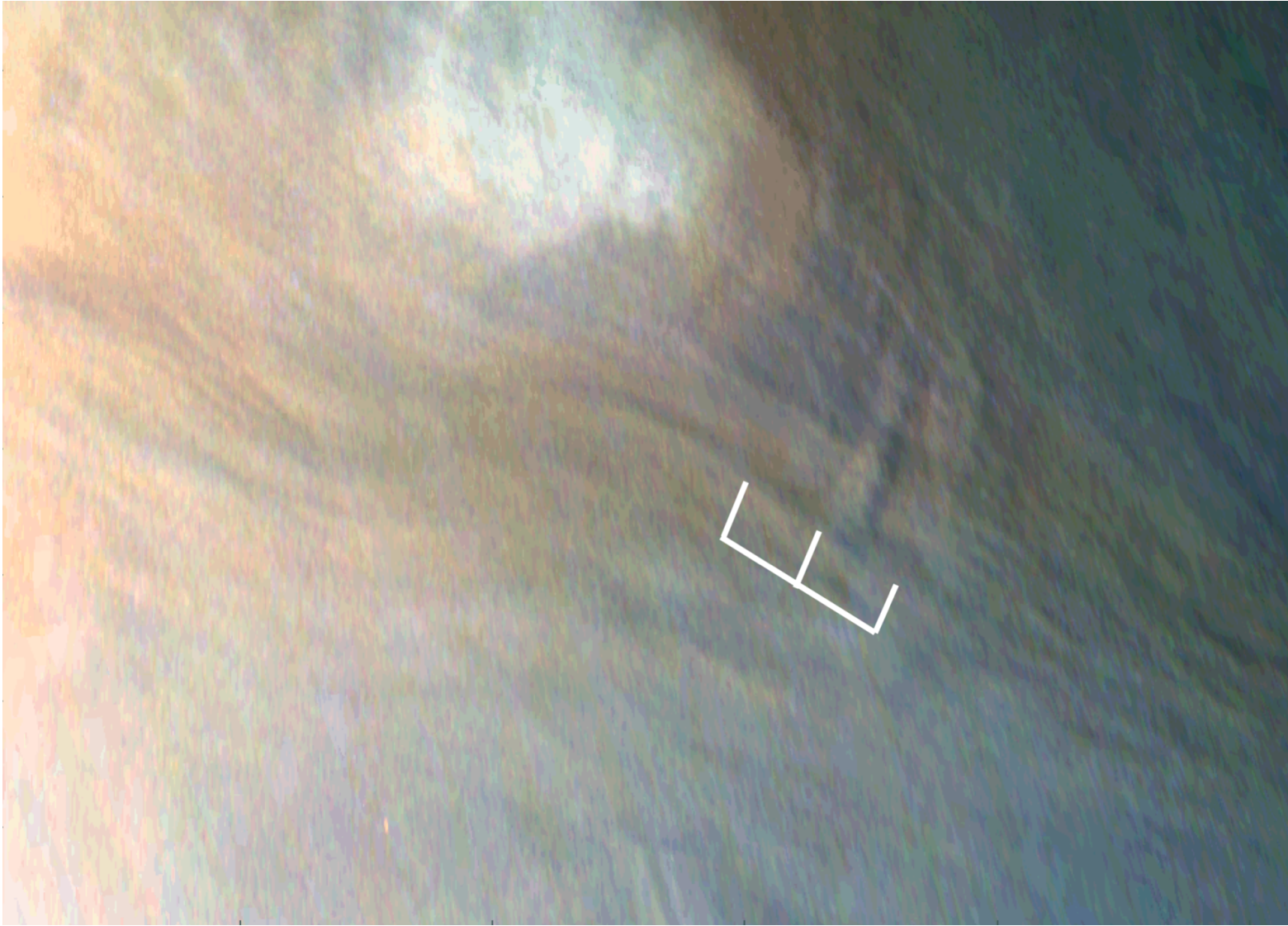


Line-Scale Waves in Jupiter's Atmosphere Detected by JunoCam

Glenn Orton (Jet Propulsion Laboratory, California Institute of Technology)

[Glenn.Orton @ jpl.nasa.gov](mailto:Glenn.Orton@jpl.nasa.gov)

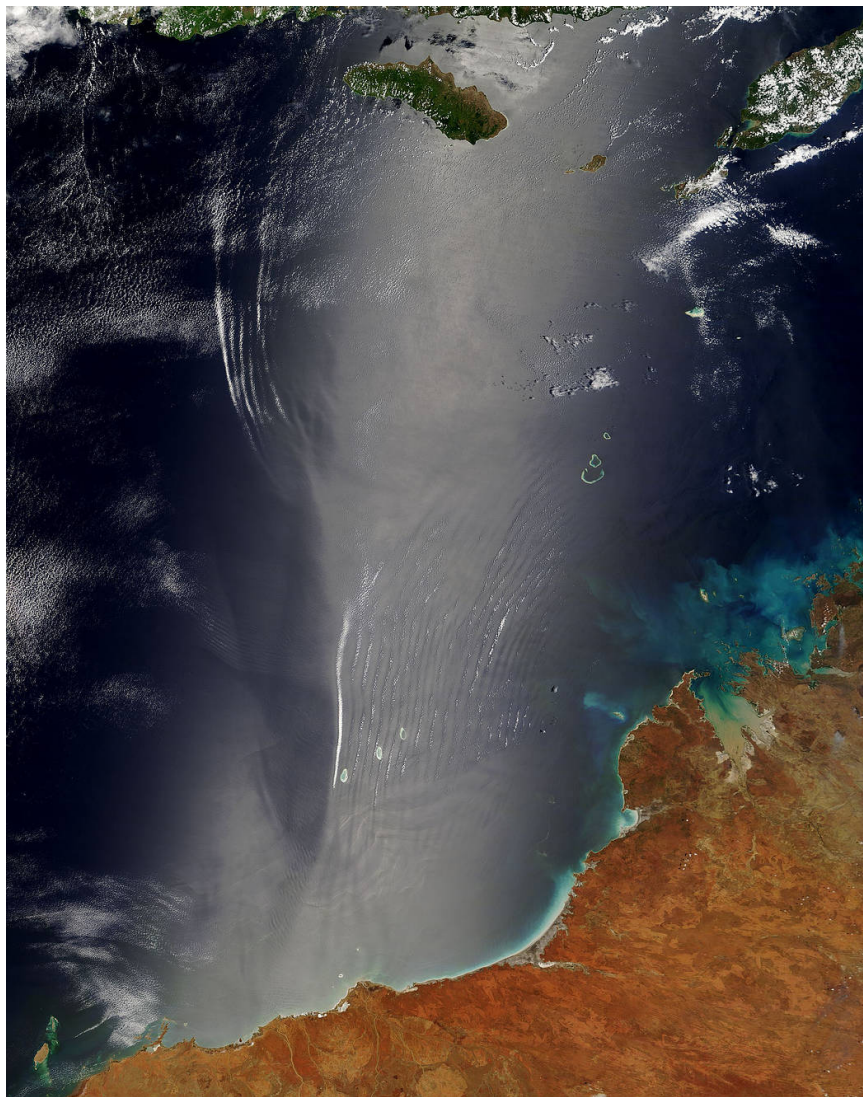




shadow length indicates the wave cloud is ~10 km above the main cloud



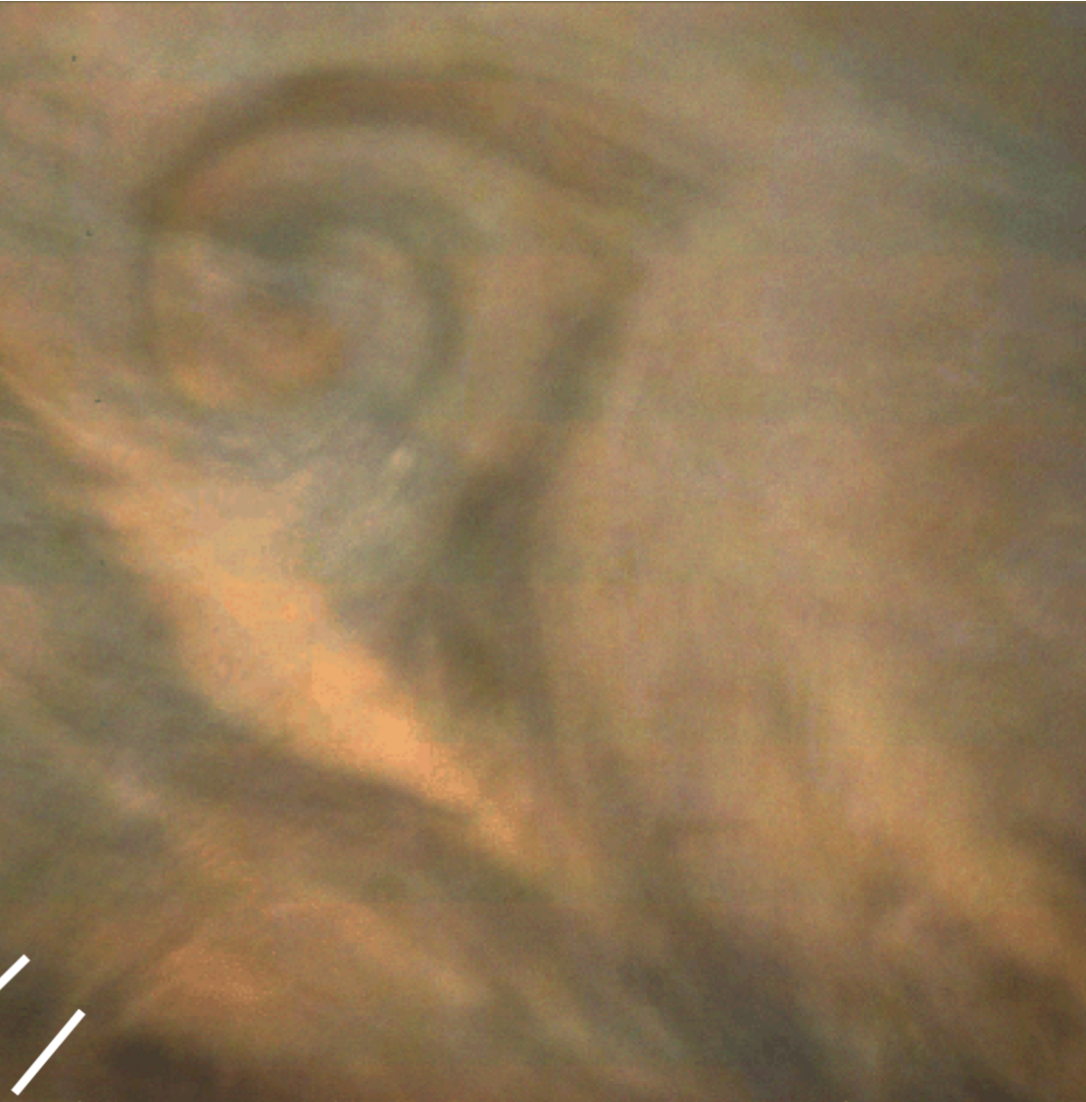
Coast of Australia



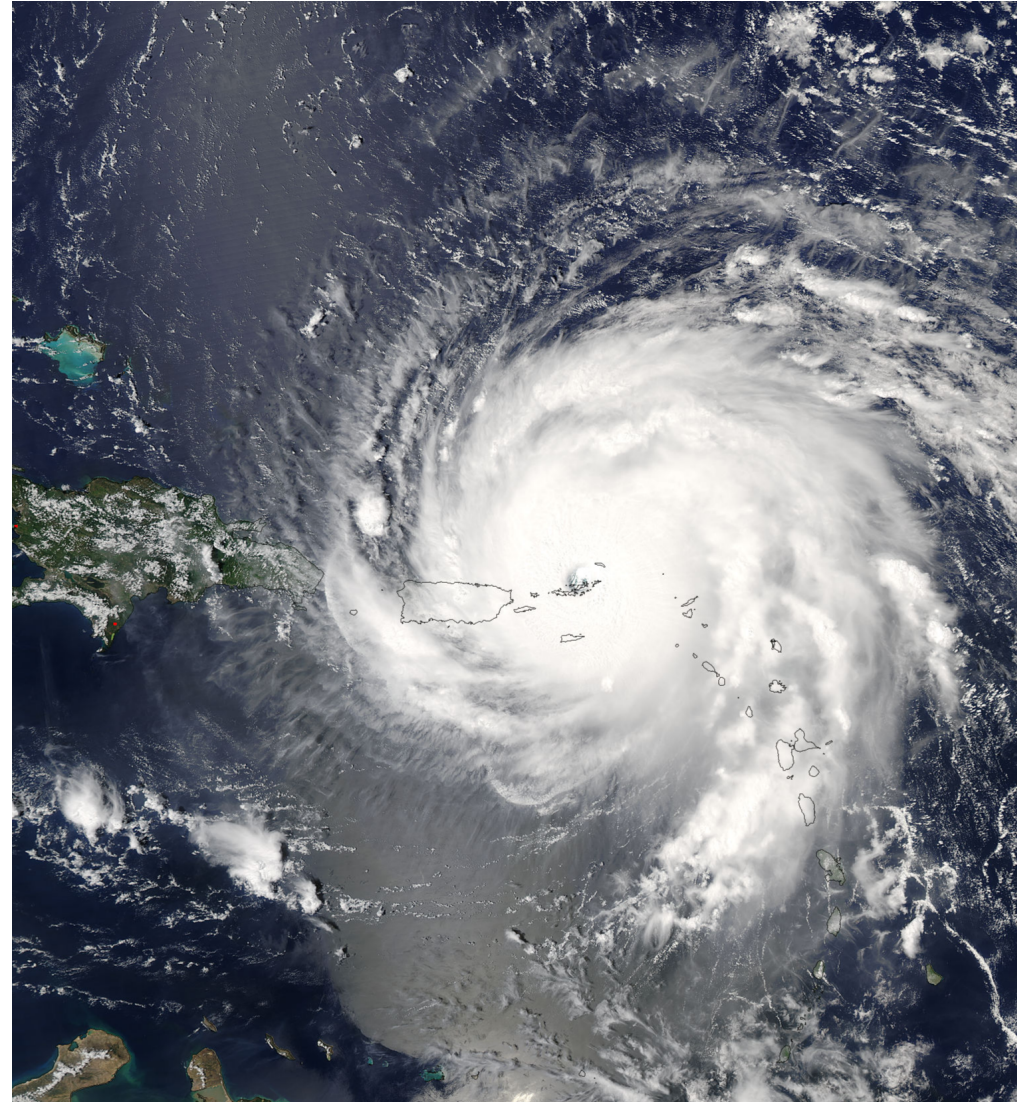
Indonesia (top) and Australia (bottom)



Sandwich Islands



North Equatorial Belt 2017



Irma 2017.

